

Welcome to Elite's Road & Bay Marking Services

Below is our concise UK road lining brochure outlining the various road marking materials commonly used in the UK, their properties, applications, and benefits.

Our brochure is designed to inform our clients, contractors, local authorities, and stakeholders about the options available to them for road line markings, focusing on safety, durability, and environmental considerations. The information is based on industry-standard materials and practices in the UK.

Elite's U.K. Road Lining Solutions: Materials and Applications

Introduction

Road markings are critical for ensuring safety, guiding traffic, and maintaining order on UK roads, car parks, and industrial sites. Choosing the right material is essential for durability, visibility, and compliance with UK regulations (e.g., EN 1436, 1871, and 1824 standards). This brochure explores the most common road marking materials, their benefits, and ideal applications to help you select the best solution for your project.

1. Paint Markings

Overview: Paint is a traditional and cost-effective road marking material, widely used for its ease of application and versatility.

Types:

- **Water-Based Paint:** Environmentally friendly with low volatile organic compound (VOC) emissions.
- **Solvent-Based Paint:** More durable and brighter, ideal for high-visibility areas.

Key Benefits:

- Affordable and quick to apply.
- Water-based options reduce environmental impact.
- Suitable for low-traffic areas or temporary markings.

Applications:

- Urban roads with moderate traffic.
- Car parks, pedestrian zones, and temporary event spaces.
- Areas requiring frequent repainting due to budget constraints.

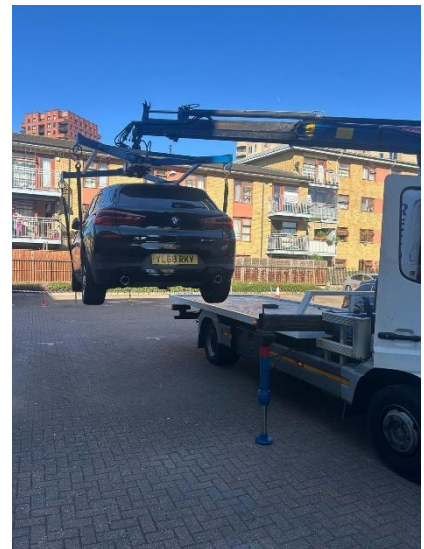
Durability: 6 months to 2 years, depending on traffic and weather conditions.

Cost: Low (£).

Visibility: Moderate (improved with reflective additives).

Considerations: Requires frequent maintenance in high-traffic areas; less resistant to wear compared to other materials.

Example Use Case: Temporary road diversions or low-traffic residential streets.



2. Thermoplastic Markings

Overview: Thermoplastic is a durable, heat-applied material made from plastic resins and pigments, solidifying into a long-lasting line.

Types:

- **Hot-Applied Thermoplastic:** Melted and applied to the road surface.
- **Preformed Thermoplastic:** Pre-cut shapes for quick installation of symbols or complex designs.

Key Benefits:

- Exceptional durability (up to 10 times longer than paint).
- Highly reflective, enhancing visibility in low-light conditions.
- Anti-slip additives available for pedestrian safety.
- Quick application with minimal disruption.

Applications:

- High-traffic roads, motorways, and pedestrian crossings.
- Cycle lanes, bus lanes, and car park markings.
- Playgrounds and industrial sites requiring durable symbols.



Durability: 5–10 years, depending on traffic volume and maintenance.

Cost: Medium (££).

Visibility: High (especially with glass beads).

Considerations: Higher initial cost than paint but lower long-term maintenance costs. Requires specialized equipment for application.

Example Use Case: Motorway lane markings or school playground designs.

3. Methyl Methacrylate (MMA) Markings

Overview: MMA is a two-part resin-based material known for rapid curing and extreme durability, gaining popularity in the UK.

Key Benefits:

- Fast curing (sets within minutes), minimizing traffic disruption.
- Highly resistant to wear, chemicals, and extreme weather.
- Excellent colour retention and visibility.
- Versatile for various surfaces (asphalt, concrete, tarmac).

Applications:

- High-traffic areas like bus lanes and cycle paths.
- Industrial sites and airports with chemical exposure.
- Pedestrian zones requiring long-lasting markings.

Durability: 5–7 years, comparable to thermoplastic in high-traffic conditions.

Cost: Medium-High (£££).

Visibility: High.



Considerations: Higher cost than paint but competitive with thermoplastic for durability. Requires skilled application.

Example Use Case: Urban bus lanes or warehouse safety zones.

4. Tape Markings

Overview: Flexible, adhesive tape used for temporary or semi-permanent road markings, available in various colours and widths.

Key Benefits:

- Easy to apply and remove without specialized equipment.
- Ideal for temporary or frequently changing layouts.
- Good visibility with reflective options available.

Applications:

- Construction zones and temporary detours.
- Bike lanes and pedestrian walkways.
- Event spaces or car parks needing quick setup.



Durability: Varies from weeks to months for temporary use; semi-permanent tapes last longer.

Cost: Low-Medium (£-££).

Visibility: Moderate-High (with reflective options).

Considerations: Less durable than thermoplastic or MMA for permanent applications. Not ideal for heavy-traffic areas.

Example Use Case: Temporary roadworks or festival parking layouts.

5. Reflective and Anti-Slip Additives

Overview: Glass beads (e.g., Cats Eyes) and anti-slip coatings are often added to paint, thermoplastic, or MMA to enhance safety.

Key Benefits:

- **Reflective Beads:** Improve night-time visibility by reflecting vehicle headlights.
- **Anti-Slip Coatings:** Increase grip, reducing slip risks in wet conditions.

Applications:

- Pedestrian crossings, school zones, and cycle lanes.
- High-risk areas like roundabouts and industrial floors.

Durability: Dependent on the base material; additives enhance performance without significantly altering lifespan.

Considerations: Adds to material cost but critical for safety in low-light or wet conditions.

Example Use Case: Zebra crossings or warehouse safety zones.

Choosing the Right Material

Selecting the appropriate road marking material depends on several factors:

- **Traffic Volume:** Thermoplastic or MMA for high-traffic areas; paint or tape for low-traffic zones.
- **Environment:** MMA and thermoplastic withstand harsh weather; water-based paints are eco-friendly.
- **Budget:** Paint is cost-effective for short-term projects; thermoplastic and MMA offer long-term savings.
- **Application:** Preformed thermoplastic for intricate designs; tape for temporary needs.
- **Safety Requirements:** Reflective and anti-slip additives for enhanced visibility and grip.

UK Regulations: All materials must comply with standards set by the UK government and road safety authorities (e.g., EN 1436 for reflectivity). Always consult with reputable contractors to ensure compliance.

Why Choose Us?

At Elite, we specialise in delivering high-quality road marking solutions across the UK. Our services include:

- **Expert Application:** Using state-of-the-art equipment for precise, durable markings.
- **Tailored Solutions:** Customized advice to match your project's needs and budget.
- **Sustainability:** Offering eco-friendly options like water-based paints and low-VOC thermoplastics.
- **Compliance:** Adhering to UK safety and quality standards.



FAQs

Q: How often do road markings need maintenance?

A: Paint markings may need repainting every 6–24 months, while thermoplastic and MMA can last 5–10 years with proper care.

Q: Are there eco-friendly options?

A: Yes, water-based paints and certain thermoplastic formulations have lower VOC emissions, making them environmentally friendly.

Q: Can road markings be removed?

A: Yes, methods like grinding, water blasting, or chemical stripping can remove markings, depending on the material and surface.

Q: Where can I find reputable suppliers?

A: Contact us for all related services & recommendations!


Conclusion

Effective Road markings enhance safety, guide traffic, and improve efficiency on UK roads and beyond. By understanding the properties of paint, thermoplastic, MMA, tape, and additives, you can make informed decisions for your project. Partner with us to deliver durable, compliant, and high-visibility road markings tailored to your organisation's requirements.

Note: This brochure is a general guide for our customers. For specific project requirements, consult with our dedicated team for all professional road marking requirements and information.

For pricing details, contact us and we will be delighted to provide you with a bespoke design and application proposal to best meet your individual sites varied needs.

Contact Us:

 0800 772 0052

 customer.services@eliteparkingmanagement.com

 www.eliteparkingmanagement.com

Request a free, no-obligation quote today to ensure safe, durable, and compliant road markings for your project!

Welcome to "our" world.....